

MUSIC  
ON  
STAGE

PRESENTS

The 25<sup>th</sup> Annual Putnam County  
**SPELLING BEE**

MARCH 9-24, 2024

S...Y...Z...Y...

...R...O...P...H...Y

L...U...G...U...

...F...F...E...R

...A...M...I...N...E

C...A...P...Y...B





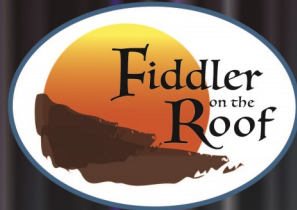
PRESENTS



October 5-20, 2024



May 3-18, 2025



February 8-23, 2025

For more information:  
[www.musiconstage.org](http://www.musiconstage.org)

Young Frankenstein, Fiddler on the Roof, and The Wedding Singer are presented through special arrangement with Music Theatre International. All authorized performance materials are supplied by MTI. [www.MTIShows.com](http://www.MTIShows.com)

All performances are held at Cutting Hall Performing Arts Center  
150 East Wood Street, Palatine, IL 60067

Cutting Hall is a facility owned and operated by the Palatine Park District



PRESENTS



Music and Lyrics by:

**William  
Finn**

Book by:

**Rachel  
Sheinkin**

Conceived by:

**Rebecca  
Feldman**

Additional Material by:

**Jay Reiss**

Originally Directed on Broadway by:

**James Lapine**

Originally produced on Broadway by:

**David Stone, James L. Nederlander,  
Barbara Whitman, Patrick Catullo,  
Barrington Stage Company, Second Stage Theater**

Produced by **Kathy Zimmermann &  
Estelle Nicholson & Chris Entwhistle**

Choreography by **Micki Smolenski**

Music Direction by **Marty Karlin**

Directed by **Frankie Caputo**

The 25th Annual Putnam County Spelling Bee is presented through special arrangement with Music Theatre International. All authorized performance materials are supplied by MTI. [www.MTIShows.com](http://www.MTIShows.com)



# Kiwaniis®

**SERVING THE PALATINE  
COMMUNITY SINCE 1960**

The Kiwanis Club of Palatine is a service club of volunteers supporting disadvantaged children and families, the elderly, and local schools.

If you take pride in your community, want to reach out to those in need, and enjoy meeting people, we welcome your help. If you have a desire to volunteer to help our community, you can visit us at

[www.palatinekiwanis.com](http://www.palatinekiwanis.com)

**Any video and/or audio recording of  
this production is strictly prohibited.**

# CAST of CHARACTERS

---

**Lincoln Skoein. . . . . Chip Tolentino**  
**Jesse Thielsen. . . . . Leaf Coneybear**  
**Korey White. . . . . William Barfee**  
**Olivia “Oli” Hoeye. . . . . Logainne Schwarzzy**  
**Emily Rose. . . . . Marcy Park**  
**Kayce Drevline. . . . . Olive Ostrovsky**  
**Allison Kasbee. . . . . Rona Lisa Perretti**  
**Trevor North. . . . . Douglas Panch**  
**Henry Allen. . . . . Mitch Mahoney**

---

\*Please Note: This musical is rated PG-13 and is a satire of stereotypes. It contains adult language, sexual references, and irreverent portrayal of a religious figure. It may not be suitable for all audiences.\*

# *Entice Your Senses*



SINCE 1920

**MORKES**<sup>®</sup>  
*chocolates*

Candy Making Parties & Supplies

**847-359-3454**

[www.morkeschocolates.com](http://www.morkeschocolates.com)

*Chocolate Makers*

*Since 1920*

*Best Cake Donuts in*

*Chicagoland Area*

**1890 N. Rand Road / North of Dundee**

**Palatine, Illinois**

# MUSICAL NUMBERS

---

## ACT I

1. The 25th Annual  
Putnam County  
Spelling Bee
2. The Rules
3. My Friend  
the Dictionary
4. Pandemonium
5. I'm Not That Smart
6. Magic Foot
7. Pandemonium  
(Reprise)
8. Rona Moment #2
9. Prayer of the  
Comfort Counselor

## ACT II

10. Chip's Lament
11. Woe is Me
12. Spelling Montage
13. I'm not That Smart  
(Reprise)
14. I Speak Six Languages
15. Jesus
16. The I Love You Song
17. Woe is Me (Reprise)
18. Rona Moment #3
19. Second (Part 1)
20. Weltanschauung
21. Pas De Deux
22. Second (Part 2)
23. The Champion

# ORCHESTRA

---

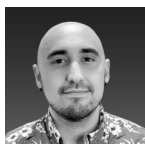
<b>Conductor</b>	Marty Karlin
<b>Keyboard Synthesizer</b>	Anna Wegener Leslie Thomas
<b>Percussion</b>	Scott Miller
<b>Cello</b>	Michelle Katz
<b>Reeds</b>	Eric Goluszka
<b>Music Contractor</b>	Diane Hansen

# CAST PROFILES

---



**Lincoln Skoein** (Chip Tolentino) obtained a BFA in Musical Theatre from CCPA at Roosevelt University last spring. Some school credits include Franklin Shepard in *Merrily We Roll Along*, Pat Denning in *42nd Street*, and Hubert in *The Life and Death of King John*. Lincoln was a part of the New London Barn Playhouse's 2023 Intern Company performing in *Guys & Dolls*, *Beautiful: The Carole King Musical*, and *The Wedding Singer*. Most recently Lincoln was in Northbrook TYA's production of *Naked Mole Rat Gets Dressed*. His upcoming role: Otto/Ulbrecht in *Spring Awakening* at Flint Repertory Theatre. Instagram:lincoln.skoien



**Jesse Thielsen** (Leaf Coneybear) is beyond excited to be returning to MOS and casted as Leaf Coneybear! Growing up as an easily distracted, hyperactive, and “just happy to be here” kid (and adult), Jesse sees so much of himself in Leaf's story. Recent MOS productions he has been in are Disney's *Newsies* (Bunson) and *State Fair* (ensemble). Outside of theatre, he can be seen working around the Chicagoland area as a music therapist with Greater Chicago Music Therapy. Enjoy the show!



**Korey White** (William Barfee) is excited for his first show with MOS! He was last seen as John Hinckley in Wee Productions' *Assassins*. Other credits include *Ragtime* (Metropolis Performing Arts), *Ragtime*, *South Pacific* (Music Theatre Works), *She Loves Me* (Blank Company), *Parade*, *Spring Awakening* (Theatre Nebula), *Planted* (Rogue Elephant Productions), *If Scrooge was a Brother* (eta Creative Arts), *Legally Blond* (Fremont Street Theatre Company), *Ragtime* (St. James Theatre), *Company*, *Jesus Christ Superstar* (Devonshire Playhouse), *Man of LaMancha* (Company of Pittsburgh), *Rent*, *Les Miserables* (Pittsburgh Musical Theatre). Korey thanks his family, friends, the amazing supportive cast and crew, and his emotional support Boris.



**Olivia "Oli" Hoeye** (Logainne Schwartzandgrubenniere) is incredibly excited to be in her first show with Music On Stage! Some of her favorite roles include Matron 'Mama' Morton in *Chicago* (High School Edition), and Wilbur in *Charlotte's Web*. Outside of pretending to be a 10-year-old, Oli is working towards an Art Degree, and intends on teaching art to actual 10-year-olds in the future! She would like to



# CAST PROFILES

---

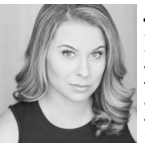
thank the cast, directors, crew, and everyone at Music On Stage for creating a friendly and comfortable environment. Lastly, she wants to thank her family, friends, and especially Sophia for supporting her in all of her endeavors!



**Emily Rose** (Marcy Park) is thrilled to be in her second production with MOS and her 26th production overall. Her most recent roles have been Polly Baker (*Crazy For You*), Specs (*Newsies*), and Maggie Winslow (*A Chorus Line*). As a recent high school graduate, Emily is now working towards her major in Music Education and minor in Musical Theatre, at Harper College. She would like to thank her friends, family, and most importantly the entire Spelling Bee team for their support and hard work to make this show come to life. Enjoy the Bee!

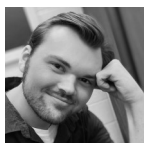


**Kayce Drevline** (Olive Ostrovsky) is thrilled to be back with MOS since her first show with them 12 years ago! Kayce is a recent graduate from the University of Iowa where she double majored in Theatre Arts and Journalism & Mass Communications. She was most recently seen on the Iowa stage in their productions of *Something Rotten!* (Featured Vocalist/Dancer) and *BLKS* (That Bitch On the Couch). Kayce would like to thank the cast, crew, and production team for bringing this dream show to life and making it such an amazing experience. All love to family and friends for the constant support. To mom and dad, thank you for always showing up to the Bee.



**Allison Kasbee** (Rona Lisa Perretti) is E-X-C-I-T-E-D to be back home at Music On Stage in one of her favorite shows! No stranger to Cutting Hall, you may have seen her previously as Belle in *Beauty and the Beast*, Princess Fiona in *Shrek: The Musical*, or most recently as Lorraine in *42<sup>nd</sup> Street*. Other Chicagoland credits include *The 25<sup>th</sup> Annual Putnam County Spelling Bee* (Olive Ostrovsky), *Hairspray* (Penny Pingleton), *Next to Normal* (Natalie), and *Cinderella* (Madame). Allison also directs and produces children's theatre with Big Noise Theatre, where she is also a proud board member. When not on stage, Allison serves the community as a mental health professional. Thank you for supporting the arts! Enjoy the Bee! For Frank and Jen.

# CAST PROFILES



**Trevor North** (Douglas Panch) is pleased to join the cast of Music On Stage's production of *The 25th Annual Putnam County Spelling Bee*, fulfilling a long standing interest in this affecting show. When not devising new ways to derail his fellow MOS actors, he is fully engrossed in the study of comics and cartoon art. Trevor thanks his family for accepting him as he is and his cat, Figgy, for always reminding him to stay vigilant.



**Henry Allan** (Mitch Mahoney) is an actor, composer, director, and writer in the Chicagoland area. His work has been seen on stage and can be heard on various streaming platforms. Some credits include: Dewey Finn (*School of Rock*), Jon (*tick, tick...BOOM!*), and Javert (*Les Miserables*). He keeps himself busy in between jobs being hunched over his piano and computer writing musicals. He is stoked to work with Music On Stage! He thanks the cast, crew and, as always, his friends and family for their constant support for his passion. Instagram: @henry.allan

Pamela Sage  
PHOTOGRAPHY



Proud Member of

847.630.564.5431  
www.pamelasage.com

PPA Professional Photographers of America



# PALATINE INN

R E S T A U R A N T



BREAKFAST ▪ LUNCH ▪ DINNER

**95 W Northwest Highway**

**Palatine, Illinois**

Everyday 7am to 9pm



## Café 14

300 N. Northwest Highway

Palatine, Illinois 60067

**847-705-6330**

\$2 off your purchase with this ad



**BROWN'S  
CHICKEN**  
It Tastes Better!™

Palatine Plaza Shopping Center

301 E. Northwest Hwy.

Palatine, Illinois

**847-358-4050**



---

# Foxglove Cottage

19 N. Brockway, Palatine

(847) 776-1555

Bring in this ad for a 15% discount on regularly priced merchandise \*Excludes consignment merchandise\*

---

## Byhring Jewelers

*Where beauty and style meet quality and integrity*



Located in the Palatine Plaza  
Shopping Center since 1960  
255 E. Northwest Highway,  
Palatine - 847-358-6588



Your Home for Quality Auto Repair

632 West Colfax Street

Palatine, IL 60067

847-358-0892

[www.johnandscotts.com](http://www.johnandscotts.com)

# PRODUCTION STAFF

---

Executive Producer .....	Kathy Zimmermann
Producers .....	Estelle Nicholson & Chris Entwistle
Director .....	Frankie Caputo
Music Director .....	Marty Karlin
Choreographer .....	Micki Smolenski
Scenic Charge .....	David Geinosky
Prop Master .....	Chris Entwistle
Costume Designer .....	Vicki Jablonski
Lighting Designer .....	Amanda Gouskos
Light board Operator .....	Diana French-Tumblin
Spotlight Operator .....	Jean Fitzpatrick
Sound Designer/Engineer .....	Valerio Gardner
Stage Managers .....	MaryAnn Belter & Rick Hollander
House Managers .....	Kathy Zimmermann & Estelle Nicholson
Ushers .....	Friends of MOS
Print Media / Marketing .....	Katie Verrette
Social Media Content Creator .....	Aaron Gomez

Based upon C-R-E-P-U-S-C-U-L-E, an original play by The Farm

The Barrington Stage Company workshop of THE 25TH ANNUAL PUTNAM COUNTY SPELLING BEE was originally co-directed by Michael Barakiva and Rebecca Feldman

## BOARD of DIRECTORS

---

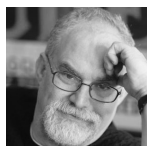
<b>Chairperson</b>	Chris Entwistle
<b>Vice Chair</b>	Diana Tumblin
<b>Secretary</b>	Kathy Blaheta
<b>Treasurer</b>	Kathy Heinze
<b>Marketing Chair</b>	Katie Verrette
<b>Artistic Director</b>	Aaron Gomez

### Members

Kathy Zimmermann, Estelle Nicholson,  
Tom French, Chris Tumblin

# AUTHOR PROFILES

---



**William Finn (Composer/Lyricist)** is the writer and composer of *Falsettos*, for which he received two Tony Awards, Best Book of a Musical (with James Lapine) and Best Original Score. He has also written and composed *In Trousers*, *March of the Falsettos* and *Falsettoland* (Outer Critics Circle Award for Best Musical, two Los Angeles Drama Critic's Awards, two Drama Desk Awards, the Lucille Lortel Award, and Guggenheim Fellowship in Musical Composition). Mr. Finn wrote the lyrics to Graciela Daniele's *Tango Apasionado* (music by the great Astor Piazzolla) and, with Michael Starobin, the music to Lapine's version of *The Winter's Tale*. His musical, *Romance in Hard Times*, was presented at the Public Theater. Recently, he wrote *Painting You for Love's Fire*, a piece commissioned and performed by the Acting Company, based on Shakespeare's sonnets. For television, Mr. Finn provided the music and lyrics for the Ace Award-winning HBO cartoon "Ira Sleeps Over," "Tom Thumb and Thumbelina," "Pokey Little Puppy's First Christmas," and, with Ellen Fitzhugh, two "Brave little Toaster" cartoons. Mr. Finn has written for *Vogue*, *Harper's Bazaar*, and *The New Yorker*. A graduate of Williams College where he was awarded the Hutchinson Fellowship for Musical Composition, Finn now teaches a weekly master class at the NYU Tisch Graduate Program in Musical Theatre Writing. His most recent projects include *Elegies*, *A Song Cycle* (Lincoln Center) and *The 25th Annual Putnam County Spelling Bee* which ran on Broadway and has been produced nationally and internationally, as well.



**Rachel Sheinkin (Book Writer)** Broadway: *The 25th Annual Putnam County Spelling Bee* (Tony, Drama Desk awards); Off Broadway: *Striking 12* (Lucille Lortel nomination), Off-Off: *Serenade*. Regional: *Guthrie*, *Little House on the Prairie*; Center Theater Group, *Sleeping Beauty Wakes* (Los Angeles Ovation Award); London: *Blood Drive*. Residencies, fellowships, commissions include: Eugene O'Neill National Theater Center, Baryshnikov Dance Foundation, MacDowell Colony, Manhattan Theatre Club, Deaf West, McCarter Theatre, Playwrights Horizons. Rachel is a volunteer mentor for TDF's Open Doors program, a visiting instructor at Yale School of Drama, and adjunct faculty member of NYU's Graduate Musical Theater Writing Program.

# AUTHOR PROFILES

---



**Rebecca Feldman (Author)** is the conceiver of *The 25th Annual Putnam County Spelling Bee* for which she won a Lucille Lortel Award, Drama Desk and Tony Nomination for Best Musical. She directed its world premiere at Barrington Stage Company in the summer of 2004.

Rebecca is Associate Producer on *Transparent, the Musical Finale* and served as Staff Writer on the finale as well. She is currently developing an episodic drama with Big Kid Pictures, called *La Coyote*, which has been selected to the WeForShe's 2019 Writeher List. She is an alumna of the Lincoln Center Director's Lab as well as the AFI Directing Workshop for Women where she won the Jean Firstenburg Award for Best Short. Her short films include, *My First Time Driving* (AFI Jean Firstenburg Award, Best Short at Lake Arrowhead Film Fest, Best of Shorts at Outfest), *A/V Club* (TV Pilot, NYTVF), *Uber Alice* (Woodstock Film Fest), *Dead Cat* (Producer, Tribeca Film Fest) and *Irving* (Official Selection Rhode Island Film Fest, Official Selection USA Film Fest, Ft. Lauderdale Film Fest, Atlanta Jewish Film Fest).



**The Farm** was founded in 2000 by Rebecca Feldman, Artistic Director. It is a collective of writers and performers, including Jay Reiss, Dan Fogler, and Sarah Saltzberg. The Farm's interest is in the role of improvisation in creating new work for the theatre. The Farm initially designates a two-week intensive period in which to discover, develop, and rehearse a play from the impulses borne mainly out of the pressure of a deadline. Previous projects include *Super* (at Atlantic Theatre Studios), *Why I Hate Florida* (workshop at White Wave in DUMBO) and *C-R-E-P-U-S-C-U-L-E* (at the Present Company Theatorium in October 2002), on which *The 25th Annual Putnam County Spelling Bee* is based. The character and original dialogue of "Beth Marguiles," "Vice President Douglas Panch," "Mr. Barfee," and "Logan Schwarzengrubenierre" were created by Rebecca Feldman, Jay Reiss, Dan Fogler, and Sarah Saltzberg, respectively.

# PRODUCTION PROFILES

---

**Frankie Caputo (Director)** is very excited to work on *The 25th Annual Putnam County Spelling Bee* with Music On Stage. Frankie got his Bachelor of Arts in Theatre from Valparaiso University. Previous credits include *Into the Woods Jr*, *Aladdin Jr*, and *Godspell* (Christian Youth Theatre), *The 25th Annual Putnam County Spelling Bee* (St Francis High School), *Cinderella* (Harvest Christian Academy), *The Loveliest Afternoon of the Year* (Valparaiso University). Previous performance credits include: *Assassins* (Ensemble) with Wee Productions, *Newsies* (Davey) with Music On Stage, and *12 Angry Men* (Juror 7) with Parker Players. Frankie is thrilled to be directing the show that welcomed him back to Chicago in 2017.

**Marty Karlin (Music Director)** is pleased to again work with Music On Stage, following last year's productions of *Beauty and the Beast* and *42<sup>nd</sup> Street*. He also worked with MOS on *Hello Dolly* (Vocal Director) and on *Music Man* and *Thoroughly Modern Millie* (Music Director). He was pit/rehearsal pianist for the MOS productions of *A Chorus Line*, *Oklahoma* and *Kiss Me Kate*. He was Music Director for Glenview Theatre Guild, Deerfield Family Theater, Highland Park Players and Uptown Music Theater on various productions. Thanks to Frankie, Micki, and the entire production team, as well as the exceptionally talented cast for their hard work. Thanks also to wife Nanci for her love and support.

**Micki Smolenski (Choreographer)** is thrilled to be working with Music On Stage for the first time! She has choreographed for Sigman Brothers Productions, and at Miami University. She currently teaches dance at Studio Impulse and Arlington Dance Academy. Previous performance credits include *The Gods Will See You Now* and *It's My Way or the My Way* (Second City), and *Parade* (Theatre Nebula). Micki is a graduate of Miami University where she studied Theatre and Software Engineering, and choreographed and directed multiple student productions.

**David Geinosky (Scenic Charge)** is pleased to join MOS once more. Previous scenic work at MOS include *Newsies*, *White Christmas*, *42<sup>nd</sup> Street*, *Little Shop of Horrors*, *Meet Me in St. Louis*, and *Guys and Dolls*. David works year round as a scenic painter, properties master and costumer for companies throughout the Chicagoland area. When David is not behind the scenes he enjoys performing. He is proud graduate of the American Musical and Dramatic Academy .



# PRODUCTION PROFILES

---

**Victoria Jablonski (Costume Design)** was eliminated from her elementary school spelling bee because she spelled “antibiotic” correctly but panicked and added an “s” at the end. Recent design credits include *Sleeping with Beauty*, *Jack off the Beanstalk* (Pride Arts), *Rocky Horror Show*, *Urinetown*, *Wedding Singer* (Surging Films and Theatrics), *Full Monty*, *Parade*, *Something Rotten* (Theatre Nebula). When not making sure actors are fully clothed, she is a recently sworn in Family Law Attorney. As always, thank you to her friends, family, and the world's worst costume assistants, her cats.

**Amanda Gouskos (Lighting Design)** is excited to be working on her second show with Music On Stage on this production of *The 25th Annual Putnam County Spelling Bee*. After finishing her associates at Harper College, she is looking forward to transferring to another school to pursue a career in the arts.

**Diana French-Tumblin (Light board Operator)** has been involved with MOS since 2002 and has worked as an employee of Cutting Hall for just as long. Mother to two beautiful daughters and married to a sound engineer, she has spent most of her life around theater. She has designed lights, sound, and stage managed for MOS in the past and is thrilled to be returning as the light board operator for *The 25th Annual Putnam County Spelling Bee*.

**Valerio Torretta Gardner (Sound Design/Engineer)** is thrilled to be working with Music On Stage for its production of *The 25th Annual Putnam County Spelling Bee*. Past credits include *Sleeping with Beauty*, *Gay Card*, *Tango*, *Jack Off The Beanstalk*, *Tommy On Top*, *When There Are Nine* (PrideArts Center); *The Full Monty* (Nebula Theater); *The Billboard* (16th Street Theater). He'd like to thank his friends and family for their continued support.

**MaryAnn Belter (Stage Manager)** is excited to be stage managing this production of *The 25th Annual Putnam County Spelling Bee* with her friend Rick. Break a leg, everyone!

**Rick Hollander (Stage Manager)** is happy to be returning to Music On Stage as a stage manager! He has worked both on stage and back stage and enjoys just being part of the team! He was most recently seen as Franklin Hart in Golden Tickets production of *9 to 5*. Break a leg to the cast and crew!

# PRODUCTION PROFILES

---

**Katie Verrette (Print Media / Marketing)** Katie's experience with musical theater has not been long, but it has been an experience. It started many years ago when she joined her school choir. That introduced her to a genre she never dreamed of, whose songs spoke to her: *Les Miserables*, *The Sound of Music*, *Cats*. Growing up and finally being able to go out and see shows cemented her love for the theater. Katie got her feet wet with MOS by helping with the playbill for *A Christmas Story: The Musical* in 2016. Later she joined the board and was there for a couple of years. Life forced her to step away for a while, and in 2023, Katie re-joined the board as Marketing Chair. Katie looks forward to seeing what MOS does in the future, and is excited to bring her creative background to the foreground. Favorite shows include *Wicked*, *Rent*, and *Little Shop of Horrors*.

**Aaron Gomez (Social Media Content Creator)** is thrilled to be working on another Music On Stage show! He is also the Artistic Director for MOS. He has recently directed *The Sound of Music* and *The Wizard of Oz*, and is currently directing Disney's *Descendants*. During the day Aaron runs his own skincare/makeup studio in Crystal Lake. Aaron was one of the founding board members of Theatre 121, and served as Secretary for 4 years. Recent theatrical roles include; Dragon (*Dragons Love Tacos*), Horton (*Seussical*), Officer Barrel (*Urinetown*), Macy's Store Manager (*Elf*), Joseph (*Joseph and the Amazing Technicolor Dreamcoat*), LeFou (*Beauty and the Beast*), Carmen Ghia (*The Producers*), Jetsam (*The Little Mermaid*), Lon Smith (*Meet Me in St. Louis*), Bert Barry (*42nd Street*), Courtney/Carlos (*Legally Blonde*), Ronette (*Little Shop of Horrors*), Bun Foo (*Thoroughly Modern Millie*). @aaronrgomezofficial

**Kathy Zimmermann (Executive Producer; House Manager)** joined MOS in 1997 and has produced numerous shows; helping with set painting, décor and costumes, managing the house, working with stage crew, and, in a pinch, even running lights. She started her theatrical career as a nun in Woodstock Opera House's *The Sound of Music* in 1978 and has appeared in 17 MOS productions. Favorite roles include: Lady Thiang in *The King and I*, Mother Abbess in *The Sound of Music*, Doris in *Damn Yankees*, and Angel City 4 in *The City of Angels*. She thanks the cast, crew, and everyone involved with this show for giving their time and talents to make the show the delight you see today. Enjoy the show!

# PRODUCTION PROFILES

---

**Estelle Nicholson (Producer; House Manager)** Though no stranger to Music On Stage, you will never see Estelle on stage! Her involvement with MOS began when her then six year old daughter (now 27!) was cast in *The King and I*. While her husband and daughter love the stage, Estelle prefers to work behind-the-scenes. She has assisted with auditions, costumes, managed the House and has helped produce a number of MOS shows. Thanks to Frankie, Micki and Marty, to her co-producers Kathy and Chris, to the cast and to all of the others that have worked tirelessly both behind-the-scenes and in front of the House to bring you this wonderful show...enjoy!

**Chris Entwistle (Producer; Prop Master)** never participated in a school wide spelling bee. This is Chris's second time producing a show with MOS after the very successful run of Disney's *Newsies* in September 2023! He started with MOS as an usher in 2013, and in 2015 was asked last minute to join tech crew for *Hairspray* and *Damn Yankees*. He was the Assistant Stage Manager for *Thoroughly Modern Millie*, Stage Manager for *The Music Man* and *Guys and Dolls*, and House Manager for several other shows. He joined the MOS Board of Directors in late 2015 and became Treasurer in 2016, a position he held for 7 years. He currently serves as the Chairperson for MOS. When he's not working at the theatre, Chris can be found in the pool teaching people how to swim, playing with his three cats (Chicken, Waffles, and Maple), or planning his next vacation with husband Jack.



You add the fresh. We add the flavor.

tastefully  
simple®

tastefullysimple.com | 866.448.6446  
© 2022 Tastefully Simple, Inc.

Janine Black  
847 208-1159 or [tsjanine@yahoo.com](mailto:tsjanine@yahoo.com)  
[www.tsbyjanine.com](http://www.tsbyjanine.com)  
<https://www.facebook.com/tsbyjanine>

# SPONSORS

---

## **Diamond Level Sponsors (\$1000 +)**

Kathy & Steve Zimmermann \* Kiwanis Club of Palatine  
Kathy Blaheta \* Anonymous \* Matthew Evans  
Arch Capital Group \* Kevin Walsh Family Foundation  
Rotary Club of Palatine

## **Platinum Level Sponsors (\$500 - \$999)**

Rikki Fine \* Photo's Hot Dogs \* Amazon Smile

## **Gold Level Sponsors (\$100 - \$499)**

Diana French \* Paul Mullen \* Michael Hill  
Charki Dunn \* Bobbi Sloan \* Jessica Means  
Estelle & Nicholas Nicholson \* Erica Patricca  
Madeleine & Rusty Franklin \* Brenda Didier  
Patrick Chambers \* Christopher Entwistle

## **Silver Level Sponsors (\$50 - \$99)**

Jori Reuter \* Bryanna Fujino \* Joan Entwistle  
Facebook \* Cafe 14 \* Carolyn Pizzato  
Aaron Gomez \* Daisy's Ice Cream  
Jonathan Cunningham \* Celeste Magers  
Debbie Katz-Knowles \* Jessi Rodriguez  
Gilbert & Barbara Benes

## **Bronze Level Sponsors (\$1 - \$49)**

Anonymous \* Marty & Nanci Karlin  
Shannon Lee Day \* Parker Stancato  
Aly Blakewell \* The Snyders  
Janet Zelenka \* Sharon Damisch  
Margie & Jim Fischer \* Latham Conger III  
SarahAnn Sutter \* Arlene Vombrack  
Bernadine Gomez \* Catherine Athenson  
Lorena Ybarra \* Joann Ludwig

# SPECIAL THANKS

---

Good News in the Neighborhood Church  
St. Joseph's Home for the Elderly  
Rotary Club of Palatine  
Palatine Park District  
Chris Entwistle  
Joan Entwistle  
Diana French-Tumblin  
David Geinosky  
Diane Hansen  
Kathy Heinz  
Ken McMullen  
Estelle Nicholson  
Pamela Sage  
Katie Verrette  
Olivia Zak  
Steve & Kathy Zimmermann  
All of our volunteer spellers

And everyone else who has helped along the way  
Thank you!!!

---

## OUR MISSION

Music On Stage is a community of performers, musicians, artisans, designers, and volunteers dedicated to the performance and development of quality live musical theatre in our suburban community.

Our goal is to provide an open venue to create, inspire, and to stretch the limits of the imagination.

# PRODUCTION HISTORY

1957-1960.....Pirates of Penzance, Red Mill, Fortune Teller, South Pacific	1997.....Sweet Charity, Jerry's Girls, Fiddler On The Roof
1961.....Rose Marie	1998.....The Sound Of Music, Current Classics In Concert, Company
1962.....New Moon	1999.... West Side Story, Cinderella, Joseph
1963.....The Music Man, Kismet	2000.....Gypsy, Red Hot & Cole, Oliver!
1964.....Plain and Fancy	2001.....She Loves Me, Little Shop Of Horrors, Anything Goes
1965.....Wildcat	2002.....Forever Plaid, Carousel, The Wizard Of Oz
1967.....Bells Are Ringing	2003 My Fair Lady, Pump Boys & Dinettes, The King & I
1968.....High Button Shoes	2004.....The Tafettas, La Cage Aux Folles, Annie
1969 Forum, Once Upon A Mattress, Little Mary Sunshine	2005.....Ragtime: The Musical, Rodgers & Hart: A Celebration, The Music Man
1970The Pajama Game, Kiss Me Kate, Puss N' Boots, Cinderella	2006.....A Chorus Line, City Of Angels, Guys & Dolls
1971.....Fiddler On The Roof	2007.....Miss Saigon, Pirates Of Penzance, Bye Bye Birdie
1972.....Promises! Promises!, Cabaret	2008 Crazy For You, Annie Get Your Gun, Forever Plaid, Holiday Extravaganza
1973.....Butterflies Are Free	2009.....Evita, 1776, Brigadoon
1974.....Camelot, Carousel	2010.....Oklahoma! Jekyll & Hyde, West Side Story
1975.....Company, Anything Goes, Damn Yankees, The Cowardly Lion	2011.....Jesus Christ Superstar*, Dracula*
1976... Woman Overboard, HMS Pinafore	2012.....The Wizard Of Oz, Avenue Q, Kiss Me Kate
1977.. Finian's Rainbow, No! No! Nanette!	2013.....The Pajama Game, Oliver!, White Christmas
1978.....Rumpelstiltskin	2014.. Willy Wonka Jr., Singin' In The Rain, Meet Me In St. Louis, White Christmas
1979..... Applause, Little Mary Sunshine	2015.....Hairspray, Damn Yankees, Shrek TYA, Thoroughly Modern Millie
1980.....Once Upon A Mattress	2016.....The Music Man, Guys & Dolls, A Christmas Story The Musical
1981.....The Fantastik's, Bye Bye Birdie, Kiss Me Kate	2017.. My Fair Lady, Little Shop of Horrors
1982.....South Pacific, Mame	2018.....Hello Dolly!, Anything Goes, South Pacific
1983..... Oliver!, Fiddler On The Roof	2019.....Joseph, The Producers, Annie
1984.....Annie, Kismet	2020.....The Sound of Music
1985.....Chicago, West Side Story	2021.....White Christmas
1986.....Evita, A Day In Hollywood/ A Night In The Ukraine, Gypsy	2022.....Beauty & the Beast, 42nd Street
1987.....A Chorus Line, 42nd Street	2023.....Disney's Newsies
1988.....Little Shop Of Horrors, Follies, Anything Goes	*Co-Production with Theatre Nebula
1989....Musical, Mame, La Cage Aux Folles	
1990.....As Time Goes By, Mack and Mabel	
1991.....Into The Woods, Hello, Dolly!	
1992.....Singin' In The Rain, Chess	
1993 City Of Angels, A Day In Hollywood/ A Night In The Ukraine, Forum	
1994.....My Favorite Year, The Music Man, Bye Bye Birdie	
1995.....Annie Warbucks, And The World Goes 'Round, Nunsense	
1996.....Guys & Dolls, Summer Stock Murders, Meet Me In St. Louis	



**662 N. First Bank Drive, Palatine, IL 60067**

Call Alan Locke: 847-991-2705

email: [alocke@lockefinancial.com](mailto:alocke@lockefinancial.com)

[www.LockeFinancial.com](http://www.LockeFinancial.com)

# Break A Leg Music On Stage!

## When Something Feels Right, You Stick With It!

Residential Real Estate in  
the Northwest Suburbs  
for Over 30 Years

Wall Street Journal's Top  
1,000 Agents Nationwide

Real Trends Top 250  
Agents Nationwide

Over 1,800 Homes Sold\*

On Average, I Sell a Home  
Every 5 Days\*



Stick with  
**Steve**  
team  
Steve Cohen

**Steve Cohen** ABR, CRS, GRI-Broker  
31 S. Evergreen Ave, Arlington Heights  
847.732.8686 | [steve@stickwithsteve.com](mailto:steve@stickwithsteve.com)  
[stickwithsteve.com](http://stickwithsteve.com)

@properties®

\*Source: Includes all career individual and team sales reported by NREIS & previous years.

09