

**MUSIC
ON
STAGE**
PRESENTS



MAY 3RD - 18TH, 2025

MUSIC ON STAGE

DEDICATES *The Wedding Singer* TO

KATIE VERRETTE



Katie's first experience with musical theater was when she joined her school choir. That introduced her to a genre she never dreamed of, whose songs spoke to her. Growing up and finally being able to go out and see all those shows cemented her love for the theater. Katie got her feet wet with MOS by helping with the playbill for *A Christmas Story: The Musical* in 2016. She then became the company's graphic designer, joined the board soon after, and later became the Marketing Chair.

Her design vision and dedication to Music On Stage will not be forgotten.

REST IN PEACE KATIE

THE MOS MISSION

Music On Stage is a community of performers, musicians, artisans, designers, and volunteers dedicated to the performance and development of quality live musical theatre in our suburban community.

Our goal is to provide an open venue to create, inspire, and to stretch the limits of the imagination.

Tickets on sale in July 2025 at www.musiconstage.org!

Buy season tickets and save!

*Presenting
Our
2025-2026
Season...*



November 15th-30th, 2025

**MUSIC
ON
STAGE**

ARTHUR 
& FRIENDS
MAKE A MUSICAL!



May 9th-24th, 2026

FEBRUARY 14TH-22ND, 2026

ELF - THE MUSICAL and LIONAL BART'S OLIVER! are presented through special arrangement with Music Theatre International (MTI). All authorized performance materials are also supplied by MTI. www.MTIShows.com. ARTHUR AND FRIENDS MAKE A MUSICAL is presented by permission of Miracle or 2 Productions, Inc., 163 Amsterdam Ave, Suite 1320, New York, NY 10023 (212) 757-6466, miracleor2.com. All performances are held at Cutting Hall Performing Arts Center / 150 East Wood Street, Palatine, IL 60067. Cutting Hall is a facility owned and operated by the Palatine Park District.

Entice Your Senses



SINCE 1920

MORKES[®]
chocolates

Candy Making Parties & Supplies

847-359-3454

www.morkeschocolates.com

Chocolate Makers

Since 1920

Best Cake Donuts in

Chicagoland Area

1890 N. Rand Road / North of Dundee

Palatine, Illinois



PRESENTS

THE WEDDING SINGER

Book by: **CHAD BEGUELIN AND TIM HERLIHY**

Music by: **MATTHEW SKLAR**

Lyrics by: **CHAD BEGUELIN**

Based upon the New Line Cinema Film

Written by: **TIM HERLIHY**

Originally produced by

Margo Lion New Line Cinema The Araca Group

Roy Furman Douglas L. Meyer / James D. Stern

Rick Steiner / The Staton Bell Osher Mayerson Group JAM Theatricals

Original Broadway production directed by John Rando

Orchestrations by Irwin Fisch

Directed by **JEN HOUGHTON**

Music Direction by **HENRY ALLAN**

Choreography by **EMMA ROBBIE**

Executive Produced by **DIANA FRENCH-TUMBLIN**

Produced by **MARK BURROWS, KATHY HEINZE** and **RYAN LAHNUM**

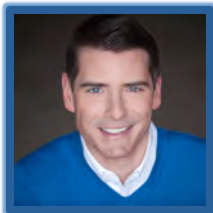
The Wedding Singer is presented through special arrangement with Music Theatre International.
All authorized performance materials are supplied by MTI. www.MTIShows.com



MUSIC THEATRE INTERNATIONAL

Music Theatre International (MTI) is one of the world's leading theatrical licensing agencies, granting theatres from around the world the rights to perform the greatest selection of musicals from Broadway and beyond. Founded in 1952 by composer Frank Loesser and orchestrator Don Walker, MTI is a driving force in advancing musical theatre as a vibrant and engaging art form. MTI works directly with the composers, lyricists and book writers of these musicals to provide official scripts, musical materials and dynamic theatrical resources to over 100,000 professional, community and school theatres in the US and in over 150 countries worldwide. MTI is particularly dedicated to educational theatre, and has created special collections to meet the needs of various types of performers and audiences. MTI's Broadway Junior® shows are 30- and 60-minute musicals for performance by elementary and middle school-aged performers, while MTI's School Editions are musicals annotated for performance by high school students. MTI maintains its global headquarters in New York City with additional offices in London (MTI Europe) and Melbourne (MTI Australasia).

AUTHOR PROFILES



CHAD BEGUELIN is a four-time Tony Nominee whose works include *Disney's Aladdin* (Tony Award Nomination for Best Book and Best Original Score, Drama Desk Award Nomination for Outstanding Lyrics and Best Book) and *The Wedding Singer* (Tony Award Nomination for Best Book and Best Original Score, Drama Desk Award Nomination for Outstanding Lyrics). He also wrote the lyrics for the Broadway musical *Elf*, which broke several box office records at the Al Hirschfeld Theatre. His play *HARBOR* premiered off-Broadway at Primary Stages. Chad also wrote the book and lyrics for *Judas & Me* (NYMF Award for Excellence in Lyric Writing), *The Rhythm Club* (Signature Theater) and *Wicked City* (American Stage Company). Chad reunited with *Elf* collaborators Matthew Sklar and Bob Martin to create the new musical *The Prom*, which ran on Broadway at the Longacre Theatre and was nominated for seven Tony Awards, including Best Musical. He is the recipient of the Edward Kleban Award for Outstanding Lyric Writing, the Jonathan Larson Performing Arts Foundation Award, the Gilman & Gonzalez-Falla Musical Theater Award and the ASCAP Foundation Richard Rodgers New Horizons Award. Chad is a graduate of New York University's Tisch School of the Arts Graduate Dramatic Writing Program.



Tim Herlihy has written or co-written the films *Billy Madison*, *Happy Gilmore*, *The Wedding Singer*, *The Waterboy*, *Big Daddy*, *Little Nicky* and *Mr. Deeds* and was an executive producer of *Anger Management* and *The Longest Yard*. These nine films have grossed more than one billion dollars in worldwide box office revenue. From 1994 to 1999, he served as writer, head writer and ultimately producer of the television series "Saturday Night Live," for which he received an Emmy nomination.

AUTHOR PROFILES



Matthew Sklar is a two-time Tony®, Emmy®, Drama Desk, and Outer Critics Circle Award-nominated composer. He wrote the music for the Broadway musicals *The Prom*, nominated for seven Tony® Awards including Best Musical and Best Original Score, winner of the 2019 Drama Desk Award for Outstanding Musical; *Elf the Musical*, a favorite perennial show in theatres across the globe; and *The Wedding Singer*, nominated for five Tony® Awards including Best Musical and Best Original Score. Matthew received a Primetime Emmy® Award nomination for Outstanding Music Direction for the critically acclaimed NBC/Warner Bros stop-motion animated TV special *Elf: Buddy's Musical Christmas*, starring Jim Parsons. The feature film adaptation of *The Prom*, starring Meryl Streep, received a Golden Globe® Award nomination for Best Motion Picture - Musical or Comedy. Matthew adapted and arranged the music of Marvin Hamlisch for the Emmy Award-winning documentary film *Marvin Hamlisch: What He Did For Love*, seen on PBS/American Masters. He has contributed original songs to *Sesame Street*, *Wonder Pets!*, and the NBC Broadcast of The Macy's Thanksgiving Day Parade. His songs have been performed by such luminaries as Julie Andrews, Ed Asner, Cookie Monster, James Corden, Ariana DeBose, Andre DeShields, Elmo, Georgia Engel, Michael Feinstein, Josh Groban, Mark Hamill, Jennifer Hudson, Keegan Michael Key, Nicole Kidman, Donna McKechnie, Jim Parsons, Mandy Patinkin, Andrew Rannells, Meryl Streep, and Kerry Washington. At 18 years old, Matthew began playing keyboards for the Broadway production of *Les Miserables*, eventually conducting the show at 21. He has also worked as a keyboardist, conductor, and/or arranger for many Broadway productions including *Shrek the Musical*, *Caroline, or Change*, *Nine*, *Oklahoma*, *Putting It Together*, *Annie Get Your Gun*, *On the Town*, *Titanic*, *Guys and Dolls*, *Sunset Boulevard*, and *Miss Saigon*. Matthew also appeared onstage as "Oscar" in the Broadway revival of *42nd Street*. Matthew is the recipient of some of the highest honors in the industry, including the Dramatists Guild Frederick Loewe Award for Dramatic Composition, the ASCAP Richard Rodgers New Horizons Award, the Jonathan Larson Performing Arts Foundation Award and the Gilman/Gonzalez-Falla Theatre Award. Matthew is a proud member of the Dramatists Guild and ASCAP. His music is published by Warner/Chappell Music. He was educated at The Juilliard School of Music (Pre-College Division), the Boston University Tanglewood Institute, and New York University.

Dying for Chocolate



A Murder Mystery Night of Interactive Fun

Join us for a night of mystery. Put on your detective hat, grab some friends and see who will be the first to figure out whodunit! There will be drinks, light bites, desserts and plenty of laughs in this 21+ night of fun. All proceeds benefit Deerfield Theater.

Friday, May 30, 7-9 pm
Patty Turner Center, Deerfield

Register at DeerfieldParks.org



CAST OF CHARACTERS

Adrian Briones.....Robbie
Danielle Piccolomini.....Julia
Korey White.....Glen
Zach Flax.....Sammy
Jack Myers.....George
Amanda Walsh.....Holly
Naomi Hershman.....Rosie
Heather Meyer.....Linda
Erin Kelley.....Angie/Featured Ensemble

Abbi Adjei-Perberg.....Featured Ensemble
Amy Barrett.....Featured Ensemble
Shivani Dewoolkar.....Featured Ensemble
Henry Gessner.....Featured Ensemble
Heidi Hansfield.....Featured Ensemble
Jeri Hart.....Featured Ensemble
Corey James.....Featured Ensemble
Cassidy Keenan.....Featured Ensemble
Katie Longo.....Featured Ensemble
Tim Martin.....Featured Ensemble
Peter Moeller.....Featured Ensemble
Dane Strange.....Featured Ensemble

This program is partially supported by a grant from the Illinois Arts Council.

Illinois
ARTS
Council

**Any video and/or audio recording of
this production is strictly prohibited.**

PRODUCTION STAFF

Director.....	Jen Houghton
Music Director.....	Henry Allan
Choreography.....	Emma Robie
Assistant Director.....	Erin O'Brien
Intimacy Coordinator.....	Jen Houghton
Set Design.....	Friends of MOS
Painter.....	Breezy Synder
Prop Master.....	Jenna Veverka
Assistant Prop Master.....	Luis Hernandez
Set Builders.....	Steve Zimmermann Bruce Edwards Friends of MOS
Costume Design.....	Jack Myers
Wig Design.....	Liz Goodin Rowe
Makeup Design.....	Liz Goodin Rowe
Lighting Design and Operator.....	Amanda Gouskos
Spotlight Operators.....	Jean Fitzpatrick Maggie McNally
Sound Design and Operator.....	Marcus Olmos
Stage Manager.....	Kevin Wright
Assistant Stage Manager.....	Jenna Veverka
Stage Hand.....	Luis Hernandez
House Manager.....	Estelle Nicholson
Ushers.....	Friends of MOS
Marketing.....	Mark Burrows
Social Media.....	Aaron Gomez Mark Burrows
Print Design.....	Ryan Lahnum Katie Verrette
Executive Producer.....	Diana French-Tumblin
Producer.....	Mark Burrows
Producer.....	Kathy Heinze
Producer.....	Ryan Lahnum

MUSICAL NUMBERS

ACT I

It's Your Wedding Day
Someday/Someday Playoff
Someday (Robbie's Reprise)
A Note From Linda
Pop!
Casualty of Love
Come Out Of The Dumpster
Today, You Are A Man
George's Prayer
Not That Kind Of Thing
Saturday Night In The City

ACT II

Entr'acte
All About The Green
Right In Front Of Your Eyes
Single
If I Told You
Let Me Come Home
Move That Thang
Grow Old With You
Act II Finale
Bows
Exit

ORCHESTRA

Conductor.....Henry Allan

Keyboard 1.....Marty Karlin

Keyboard 2.....Lily Shapkarov

Keyboard 3.....Anna Wegener

Guitar 1.....Bill Dejon

Guitar 2.....Parker Stancato

Guitar 3.....H Allan

Bass.....John Summers

Drums.....John McCreary



Café 14

300 N. Northwest Highway

Palatine, Illinois 60067

847-705-6330

\$2 off your purchase with this ad

Foxglove Cottage

168 S. Bothwell, Palatine

(847) 776-1555

Bring in this ad for a 15% discount on regularly priced merchandise *Excludes consignment merchandise*



95 W Northwest Highway

Palatine, Illinois

Every Day 7am to 9pm

CAST PROFILES



ADRIAN BRIONES (ROBBIE) is so excited to be making his MOS debut, and he just can't hide it! Previously, he appeared in *Seussical* (Horton), and *How To Succeed...* (Bud Frump), and *The Music Man* (Marcellus). To my fellow castmates, I will forever be your biggest fan. To my wife, Amanda: thanks for making me audition. You were right. It's been far too long.



DANIELLE PICCOLOMINI (JULIA) is in her thirties and so excited to finally be playing an adult after a year of playing 12 year olds. Speaking of which, you may have seen her prancing around as Veruca in *Charlie and the Chocolate Factory* (Deerfield Family Theater) or prancing around as Melinda in *Inherit the Wind* (Theater D) recently. Big thanks to the production team for this opportunity and to her family and friends for cheering her on at every stage of life!



KOREY WHITE (GLEN) is excited to be returning to MOS! Korey was last seen as William Barfee in *The 25th Annual Putnam County Spelling Bee*; other roles include Prof. Callahan in *Legally Blonde* with Music Theatre Works, as well as roles in *Coalhouse Walker Jr.*, in *Ragtime* (Metropolis Performing Arts) and Kodaly in *She Loves Me* (Blank Theater Company). Korey thanks his family, friends, the amazing and supportive cast, crew, and production team of *The Wedding Singer*, and his emotional support Boris.

CAST PROFILES



ZACH FLAX (SAMMY) is thrilled to be doing his first MOS show as Sammy! He attended college and has done other shows for other theaters. He loves a good inside joke and snuggling with his pup Chewy. You should totally check out Heather Meyer's Bio, she rocks, and is married to a stud... ok it's me. Much love to the whole cast.



JACK MYERS (GEORGE) in their MOS debut, is thrilled to be joining the cast and creative team of *The Wedding Singer*! They were most recently seen as The Waiter, Kodaly u/s (*She Loves Me*), and Brad Majors (*Rocky Horror*) at the PM&L, and Joseph II (*Amadeus*) at the Barrington Theater. Jack is the resident costume designer for Parker Players Theater Co. and has dressed their productions since 2024, including *Amadeus*, *Glengarry Glen Ross*, and *Mauritius*.



AMANDA WALSH (HOLLY) is psyched to return to MOS alongside this talented cast and team! Favorite prior roles include Eliza Doolittle (*My Fair Lady*, MOS), Belle (*Beauty and the Beast*, Fremont Street), *Lady of the Lake* (Spamalot, Brightside Theatre), Nancy (*Oliver!*, Wilmette Center for the Arts), and Aunt Em/Glinda (*The Wizard of Oz*, Windy City Music Theatre). By day, Amanda is a Chicago Public Schools pre-k movement teacher, where she plays "The Floor is Lava" and gets frequently sneezed on.

CAST PROFILES



NAOMI HERSMAN (ROSIE) is thrilled to be playing this exhilarating role and to be back on the MOS stage since her appearances in *The Producers* and *The Sound of Music*. Loving performing throughout the North Shore, she was most recently seen in *Ragtime* (Featured Ensemble) and *Les Miserables* (Old Woman/Ensemble) along with her other favorites of *Pajama Game* (Mabel), *Oliver* (Widow Corney), and *Oklahoma* (Aunt Eller). She is most grateful to this incredible production team and the remarkable actors with whom she shares this stage. Love to her wonderful supportive friends onstage and off.



HEATHER MEYER (LINDA) is STOKED to be bringing the rockin' Linda to life with this talented cast and crew in her MOS debut. Since moving to Chicago in 2015, she has spent countless hours writing and performing sketch comedy with her pals at Corn Productions, as well as co-writing/co-directing a full-length horror comedy with her PIC (Partner in Comedy). Recent credits include: *Moon Over Buffalo* (Eileen) Wheaton Drama, *Young Frankenstein* (Focaccia/Ensemble) Wheaton Drama, *Murder on the DeLorean Express* (Old Jen) Greenman Theatre. Heather is incredibly thankful for her community and their support, especially Zach and Chewy - much love to all. Now let's ROCK!



ERIN KELLEY-SHE/HER (ANGIE / FEATURED ENSEMBLE) is excited to be a part of *The Wedding Singer*! She was most recently seen in Uptown Music Theater's *Les Miserables* as Mme. Thenardier and Metropolis' *Rocky Horror*. Previous credits include *Legally Blonde* (Elle Woods), *Guys and Dolls* (Adelaide), *Cinderella* (Fairy Godmother) and a member of the professional ensemble at ComedySportz Chicago. Thank you to her friends and family for all their love and support. For Tom, Ben, and Abby.



301 N NORTHWEST HWY
PALATINE

Order Online at www.photoshotdogs.com

We are pleased to support
Music On Stage.



Pleasing People...Since 1936

1200 N. Milwaukee Ave, Glenview, IL 60025
847.967.8830 | Abt.com



Kiwanis[®]

**SERVING THE PALATINE
COMMUNITY SINCE 1960**

The Kiwanis Club of Palatine is a service club of volunteers supporting disadvantaged children and families, the elderly, and local schools.

If you take pride in your community, want to reach out to those in need, and enjoy meeting people, we welcome your help. If you have a desire to volunteer to help our community, you can visit us at

www.palatinekiwanis.com

CAST PROFILES



ABBI ADJEI-PERBERG (FEATURED ENSEMBLE)

is thrilled to be back for her second MOS show with this talented cast and amazing creative team!! She has been previously seen in various productions, including *Joseph and the Amazing Technicolor Dreamcoat* (Narrator), *The Prom* (Mrs. Greene), *Newsies* (Medda Larkin), *Ragtime* (Sarah's Friend) and *Hairspray* (Motormouth Maybelle). To Geoff, her husband and 3 kids - Savanna, 25; Alexander, 14; Ariyana, 13, and the entire village - thank you!! Hope you enjoy the show!



AMY BARRETT (FEATURED ENSEMBLE)

is excited to be performing again with MOS. She previously appeared with MOS in the ensemble of *Young Frankenstein the Musical*. Other favorite roles include Violet (*Side Show*), Miss Sandra (*All Shook Up*) and Snoopy (*You're a Good Man, Charlie Brown*.) She would like to thank her family for their love and support.



SHIVANI DEWOOLKAR (FEATURED ENSEMBLE)

is thrilled to be returning to the stage after a hiatus from performing. She's excited to be part of the ensemble and can't wait to bring all her energy to the show! When she's not on stage, you can find her going for a morning run on the lakeshore, binging *Desperate Housewives*, or planning her next travel adventure. A huge thank you to her incredible family and friends for their unwavering support. She couldn't do this without you!

CAST PROFILES



HENRY GESSNER (FEATURED ENSEMBLE) is thrilled to bring his favorite Sandman comedy to life for his actual MOS debut, not counting his time as an audience volunteer in last year's *Spelling Bee*. Favorite past credits include: *Something Rotten!* (Nigel Bottom), *Don't Let the Pigeon Drive the Bus* (Teenager, u/s Pigeon), *Charlie and the Chocolate Factory* (Augustus Gloop), *School of Rock* (Ned Schneebly), *Ragtime In Concert* (Featured Ensemble), *Beauty and the Beast* (Bookseller, u/s Lumiere and Cogsworth), *Seussical* (Wickersham Brother), *Spelling Bee* (Leaf Coneybear), *Little Shop of Horrors* (Seymour). Offstage, Henry enjoys watching movies and reviewing them on Letterboxd, playing his piano, and tearing it up at karaoke nights and Broadway Raves. He thanks his friends and family for their love and support, the cast and crew for an amazing adventure, and all the musicians he jammed out to to get in the zone for this show.



HEIDI HANSFIELD (FEATURED ENSEMBLE) is excited to be in her first MOS production with such a fun cast and crew! Some of her favorite past roles include Sister Robert Anne in *Nunsense* (Saint Sebastian Players), Lettie in *Something's Afoot* (MadKap Productions), Susan in *Title of Show* (Big Deal Productions), and Lois/Bianca in *Kiss Me, Kate* (Big Noise Theatre). Off the stage, Heidi is a pediatric speech-language pathologist. Many thanks to her family and friends for all their support!



JERI HART (FEATURED ENSEMBLE) is thrilled to be joining the MOS family! She has performed in numerous Chicago-area musicals, including *Cinderella* (Marie), *Title of Show* (Heidi), *Hello Dolly!* (Minnie Fay), *Beauty and the Beast* (Babette), and more! By day, Jeri is a 5th grade teacher in Northbrook. Many thanks to the incredible cast and production team!!

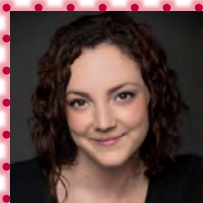
CAST PROFILES



COREY JAMES (FEATURED ENSAMBLE) is thrilled to be returning to MOS for a 3rd time this year. Corey was last seen at MOS in *Fiddler on the Roof* (Fyedka). Corey has an Associates Of Arts Degree. Some of Corey's credits include: *Young Frankenstein* (Frankenstein's Monster) MOS, *First Date* (Reggie/Aaron Understudy) Point2 Productions, *Karaoke Christmas* (Alex) Three Brothers Theatre, *Big Fish* (Will Bloom) St. James Theatre. Corey is looking for representation. Corey wants to thank everyone who believes in him.



CASSIDY KEENAN (FEATURED ENSEMBLE) is thrilled to be making her MOS debut! Some of her other favorite credits include *Dragons Love Tacos* (Big Noise Theatre), *Hershel and the Hanukkah Goblins* (Strawdog Theatre), *Our Town* (The Theater Lab), and *Peter and the Starcatcher* (Arena Theater). She was also an award-winning semifinalist in the Grand Rapids Civic Theatre's 2023 "Ten For All" Playwriting Festival, where they produced a staged reading of her original work, *To Jack and Laurel*. Cassidy would like to thank her family and friends, as well as the entire amazing cast and crew at MOS.



KATIE LONGO (FEATURED ENSEMBLE) is a bilingual Speech Language Pathologist, and has continued to perform whenever she can. She enjoys spending time with her little love Lanie and crafting. Some of her favorite past roles include *Seussical* (Gertrude McFuzz) and *42nd Street* (Peggy Sawyer), and *Legally Blonde* (Serena). Thank you to my amazing and supportive family! I love you!

CAST PROFILES



TIM MARTIN (FEATURED ENSEMBLE) lives in Chicago, but is excited to be returning to the suburbs where he grew up performing. He is thrilled to be making his MOS debut - especially with this talented cast! He is deeply grateful to his family and friends for their unwavering support over the years. Lots of love to Sergio for his constant encouragement and for taking such great care of Meeko during rehearsal.



PETER MOELLER (FEATURED ENSEMBLE) is thrilled to be back in the theatre with MOS! Recent credits include *The Hunchback of Notre Dame* (Highland Park Players), *Sleeping With Beauty* (PrideArts), *Assassins* (Wee Productions), and *The Full Monty* (Theatre Nebula). He'd like to thank his partner Stuart for tolerating the recent uptick in shower singing.



DANE STRANGE – HE/HIM (FEATURED ENSEMBLE) is excited and thankful to return to the stage with MOS' production of *The Wedding Singer* after a year long break. Past credits include MOS' *White Christmas* (Ensemble) and *Beauty and the Beast* (Lefou/Ensemble), Theo Ubique's *Passing Strange* (Ensemble 1), Theatre Nebula's *The Full Monty* (Keno/Ensemble) and *Something Rotten!* (Robin/Ensemble), Music Theater Works' *Spelling Bee* (U/S Mitch & Barfee), *Pippin* (Ensemble), and *La Cage Aux Folles* (Jacob), and Harper College's *Hair* (Ensemble) and *American Idiot* (Ensemble).

RAUE CENTER FOR THE ARTS

2025

UPCOMING EVENTS



GREAT ENTERTAINMENT CLOSE TO HOME

03 The Lennon Project

A tribute to **John Lennon's** life and music. PROCEEDS BENEFIT THE AMERICAN LEGION POST 171

7 PM

04 Blazier Run For The Arts

5K and 1 mile fundraiser! Lace-up for the arts!

8 AM

09 Stand-up Momey

The mother of all stand-up comedy!

8 PM

10 70s Radio Rock

Presented by Soundtracks of a Generation

7 PM

16 Bob Seger Tribute Band

A tribute to the music of Bob Seger

8 PM

17 Blue-Eyed Soul Session

The music of Joe Cocker, Van Morrison with Derrick Procell

7 PM

23 Lucy's Comedy Stand-up

with Vince Carone and Joanna Clark

8:30 PM

24 Greenroom Improv

A tribute to the music of Bob Seger

7 PM

13 For Fathers Comedy

A little something for Dad. He deserves a laugh.

8 PM

12 Pat McGann

Chicago's very own...a great night of stand-up comedy!

7 PM

-27 RCSA presents Disney's Frozen Jr

Youth cast brings this beloved story to life!

ROCK THE RAUE

Celebrating 25 years in 2025!



rauecenter.org | 815.356.9212

26 N Williams Street
Crystal Lake, IL 60014

Become a **RAUE NOW** Member
and get reduced fees, early access
and 30% OFF!

PRODUCTION PROFILES



JEN HOUGHTON (DIRECTOR / INTIMACY COORDINATOR)

is a director, choreographer, designer and playwright. They've worked with Chicagoland companies such as Metropolis Performing Arts Centre, Highland Park Players, Big Noise Theatre, Theatre D, Parker Players Theater Company, Annoyance Theatre and BoHo Theatre. Regional credits include Sierra Repertory Theatre, Glimmerglass Opera, Trinity Repertory Company and Paper Mill Playhouse. NYC credits include Stella Adler Studio, Joyce Theatre, and St. James Theatre (Broadway). Recent Director/Choreographer projects include *Amadeus*, *Cabaret*, *Matilda*, *Wizard of Oz*, *Love Sick*, *Legally Blonde*, *Shout!*, *Footloose* and *The Prom*. Jenilee is a co-founder of Moving Bench Theatre, and also a proud member of SDC (Stage Directors & Choreographers Society).



EMMA ROBIE (CHOREOGRAPHER)

is a choreographer, dancer, and performer. Her choreography was most recently seen in MOS's production of *Newsies*. Outside of theater, Emma is a dance instructor at That's Entertainment Performing Arts Center in Palatine, as well as a special education teacher. She also enjoys spending time with her cat, Nigel. Love ya Bry!

PRODUCTION PROFILES



HENRY ALLAN (MUSIC DIRECTOR) is an actor, composer, director, and playwright in the Chicagoland area. His original work has been seen on stage and can be heard on various music streaming platforms. He has worked both on and off stage with companies such as Highland Park Players (*School of Rock*; *Be Our Guest: A Culinary Cabaret*), Big Noise Theatre (*James & the Giant Peach*; *Elephant & Piggie's "We Are In A Play"*; *Don't Let the Pigeon Drive the Bus*), The Sigman Brothers Productions (*Dogs!*; *Rip Van Winkle*), The Home Creative Company (*Godspell*; *Little Women*; *tick, tick...BOOM!*), Big Deal Productions (*The Little Mermaid*; *Evita*), and right here at MOS (The 25th Annual Putnam County Spelling Bee)! Having previously performed in *The Wedding Singer* back in high school, he is absolutely thrilled to hop into the music director's chair this time around and work with this great team. Many thanks to all involved! Instagram: @henry.allan

PRODUCTION PROFILES



ERIN O'BRIEN (ASSISTANT DIRECTOR) is delighted to be working with MOS again after having costumed *Young Frankenstein* and performed in *Newsies*. Favorite acting credits include *A Christmas Carol: A Pantomime* (Sid Spectre), *Vanya & Sonia...* (Cassandra), *The Little Mermaid* (Andrina), *Shrek* (Peter Pan), *Avenue Q* (Mrs. Thistlethwaite), *Antigone* (Antigone). Other costuming credits include *Fame*, *In the Heights*, *42nd Street*, and *A Few Good Men*. Erin is also a director for Skyline Children's Theater and is looking forward to future directing endeavors. She is excited to work alongside her husband Kevin again.



KEVIN WRIGHT (STAGE MANAGER) is excited to make his backstage debut with MOS, after appearing onstage in *Newsie*'s last season as Joseph Pulitzer. Previous stage managing credits include *Vanya and Sany* and *Little Women*, but he's also been known to operate a soundboard or build a set from time to time. Favorite onstage roles include Joseph (*Joseph and the Technicolor Dreamcoat*) and Beast (*Beauty and the Beast*). Kevin is thrilled to once again work alongside his wonderful wife, Erin, for their 9th show together in 7 years. He'd like to apologize to his dogs, Loki and Thor, for how much time he's been away from them during this rehearsal process.



BREEZY SYNDER (PAINTER) was born in Millersburg, Ohio, and now lives in Chicago, Illinois. They earned a bachelor's degree in fine arts from the School of the Art Institute of Chicago. At times, she finds the magnitude of her work so big that she must send herself flowers, painting large scale flowers brings her comfort. You can find more of her work on Instagram @breezydarbyart

PRODUCTION PROFILES



JACK MYERS (COSTUME DESIGN) in their MOS debut, is thrilled to be joining the cast and creative team of *The Wedding Singer*! They were most recently seen as The Waiter, Kodaly u/s (*She Loves Me*), and Brad Majors (*Rocky Horror*) at the PM&L, and Joseph II (*Amadeus*) at the Barrington Theater. Jack is the resident costume designer for Parker Players Theater Co. and has dressed their productions since 2024, including *Amadeus*, *Glengarry Glen Ross*, and *Mauritius*.



LIZ GOODIN ROWE (WIG DESIGN/MAKEUP DESIGN) As a new member of the MOS community, Liz is excited to support the director's vision for *The Wedding Singer* as the hair, wigs, and makeup designer. She is grateful to her husband and children for their love and support. Previous productions include *A Christmas Carol* (ensemble), *Shadowlands*, *Elf Jr.*, *Seven Keys to Baldpate* (Hal Bentley), *Young Frankenstein*, *Still Alice*, and *August: Osage County*. Liz is honored to contribute her skills to this production and looks forward to helping bring the magic of theater to life for the audience.



JENNA VEVERKA (PROP MASTER/ASSISTANT STAGE MANAGER) is so totally stoked to be back with MOS for the third time this season. This time around, she's working behind the scenes as the Assistant Stage Manager and Prop Master! She has previously been seen on stage in *Young Frankenstein*, *Fiddler on the Roof* (MOS), *Grease* (Metropolis) and *Big Fish* (Harper College). She would like to thank her family and her boyfriend, Henry, for all of their constant support!

PRODUCTION PROFILES



AMANDA GOUSKOS (LIGHTNING DESIGN / OPERATOR) is excited to be working on her fourth show with MOS. She has been working in theater since 2022 and is currently attending school to study lighting design. She is looking forward to working on *The Wedding Singer* this spring with MOS as well.



MARCUS OLMOS (SOUND DESIGN / OPERATOR) is excited to be a part of MOS' *The Wedding Singer*.



LUIS HERNANDEZ (ASSISTANT PROP MASTER / STAGE HAND) is a Stage Management Major at Columbia College Chicago. Columbia credits include Hamlet (ASM), New-Stew (Usher), and Lost Girl D3 (Stagehand) and most recently MUD (Stage Manager). Recent credits: Big Fish (St. James Church, SM), Grease! (Skokie Theatre, RSM), The Lightning Thief (Skokie Theatre, Sound Asst./Board Op), Young Frankenstein (Music On Stage, PSM), Cinderella & A Christmas Carol (Metropolis PAC, Tech Swing), Fiddler on the Roof (Music On Stage, PSM), Joseph the Amazing Color Dreamcoat (A2, Marriot Theatre), Descendants (The Sears School, Technical Director) Luis is excited to be back with Music on Stage for his 3rd production.



**The
Chicagoland
Premiere!**

2024-2025 season

The Value of Moscow



**Written by Amy Dellagiarino
Directed by Brian Rabinowitz**

**3 desperate sisters, 1 bottle of vodka,
1 pizza guy, 1 ex-boyfriend, 1 gun. Do the math!**

May 9, 10, 11, 16, 17, and 18, 2025

Friday and Saturday at 7:30 P.M. and Sunday at 2:00 P.M.

Elgin Art Showcase

164 Division St. | 8th Floor | Elgin, IL

Tickets: adults \$25.00

seniors (over 62)/students/veterans \$23.00

For tickets:

Web: www.elgin-theatre.org
or click on the QR code



For information:
call: (847) 741-0532



Warning: Contains adult language and violence.

The Value of Moscow is presented by special arrangement with Broadway Licensing, LLC, servicing the Dramatists Play Service collection. (www.dramatists.com)



BOARD OF DIRECTORS

Chairperson.....Kathy Zimmermann

Vice Chair.....Diana French-Tumblin

Secretary.....Kathy Heinze

Treasurer.....Chris Entwistle

Artistic Director.....Aaron Gomez

Marketing Chair.....Mark Burrows

Members.....Estelle Nicholson / Tom French / Ryan Lahnum

Nanci Karlin / Chris Tumblin

Kathy Blaheta / Frankie Caputo

Mario Mazzetti

SPONSORS

Diamond Level Sponsors (\$1000 +)

Cook County Arts Alliance * Estate of Steve Nickerson
Illinois Arts Council * Rotary Club of Palatine * Kathy & Steve Zimmermann
Anonymous * Kiwanis Club of Palatine * Arch Capital Group
Kevin Walsh Family Foundation

Platinum Level Sponsors (\$500 - \$999)

Rikki Fine * Photo's Hot Dogs * Matthew Evans * Diana French-Tumblin

Gold Level Sponsors (\$100 - \$499)

Kathy Heinze * Plum Grove Printers * Estelle & Nicholas Nicholson
Lou Malnati's * Buffalo Grove Pilates * Amazon Smile * Jesse McCabe
Jessica Means * Barrington Pilates * Josh Holbrook
Madeleine & Rusty Franklin * Tap House * Wendy's * Erica Patricca
Aaron Gomez * Marty & Nanci Karlin * Charki Dunn * Kristal Craven
Facebook * Brenda Didier * Camille Miller * Jason Hunter * Kathy Blaheta
Patrick Chambers * Paul Mullen

Silver Level Sponsors (\$50 - \$99)

Mario Mazzetti * Bryanna Fujito * Nina Iraci * Sharon Del Ra * Susan Minott
Panera * Latham Conger III * Cafe 14 * Cooper's Hawk * Ryan Lahnum
Christopher Entwistle * Carolyn Pizzato * Celeste Magers
Daisy's Ice Cream * Gilbert & Barbara Benes
Jessi Rodriguez * Jonathan Cunningham * Katie Varrette * Bobbi Sloan

Bronze Level Sponsors (\$1 - \$49)

Chipolte * Kristine Murphy * Ted Rafferty * Krispy Kreme * Allison Kasbee
Alyson Stanczak * Annie Snow * Carlyn Williams * Colleen O'Mahoney
Erica Cowhey * Jesse Roberts * Kara Vombrack * Kathleen Roger
Kylan Strissel * Maggie Caputo * Marcella Azelrad
Anonymous * CDW * Debbie Katz-Knowles * Joan Entwistle
Kelly O'Connor * Shannon Lee Day * Steve Turner * Daniel LaPlant
Denise Dolins * Donovan Mickels * Henry Allan * John Ryan * Ken Curtis
Kimberly French * Lisa Boyer * Lynn Haas * Mark Burrows * Nellie Beckner
Olaf Henjum * Allyson Harris * Samantha Gassel
Tom French * Bernadine Gomez



662 N. First Bank Drive, Palatine, IL 60067

Call Alan Locke: 847-991-2705

email: alocke@lockefinancial.com

www.LockeFinancial.com

SPECIAL THANKS

Good News in the Neighborhood Church
St. Joseph's Home for the Elderly
Steve and Kathy Zimmermann
The Burrows-Beresheim Family
Tom French
Chris Tumblin
Palatine Park District
Sean O'Neil
Laney Laubert
North Riverside Players
Cassi Fanelli
Barbara DePersia
Kody Burkemper
Wheaton Drama
Buffalo Grove Park District
Harper College
Matthew Pablecas and his bands
Oh Yes! and Bon Journeyed
Raue Center for the Arts

And everyone else who has
helped along the way!

Thank you!!!

LAMPLIGHTER INN



TAVERN & GRILLE

Palatine, IL

Family-owned, neighborhood pub/bar located in the NW suburb of Palatine. We provide a friendly atmosphere that has been attracting customers since 1975. It is hard to visit “Lamps” without running into someone you know. A full menu is served in our tavern, restaurant dining room, or for carry-out. A private party room is available for small or large groups.

Enjoy live music, open mic night, karaoke, pub, bar, and beer garden.



Monday - Thursday:	Lamplighter Inn
6:00 am - 12:00 am	60 N. Bothwell Street
Friday - Saturday:	Palatine, IL 60067
6:00 am - 2:00 am	(847) 991-2420
Sunday:	info@lamplighters.com
6:00 am - 12:00 am	

Carry Out and GrubHub is offered 11am - 8pm 7 days a week

PRODUCTION HISTORY

1957-1960.....	Pirates of Penzance, Red Mill, Fortune Teller, South Pacific	1997.....	Sweet Charity, Jerry's Girls Fiddler On The Roof
1961.....	Rose Marie	1998.....	The Sound Of Music Current Classics In Concert, Company
1962.....	New Moon	1999.....	West Side Story, Cinderella, Joseph
1963.....	The Music Man, Kismet	2000.....	Gypsy, Red Hot & Cole, Oliver!
1964.....	Plain and Fancy	2001....	She Loves Me, Little Shop Of Horrors Anything Goes
1965.....	Wildcat	2002.....	Forever Plaid, Carousel The Wizard Of Oz
1967.....	Bells Are Ringing	2003.....	My Fair Lady, Pump Boys & Dinettes The King & I
1968.....	High Button Shoes	2004...	The Tafettas, La Cage Aux Folles, Annie
1969.....	Forum, Once Upon A Mattress Little Mary Sunshine	2005.....	Ragtime: The Musical Rodgers & Hart: A Celebration The Music Man
1970.....	The Pajama Game, Kiss Me Kate Puss N' Boots, Cinderella	2006.....	A Chorus Line, City Of Angels Guys & Dolls
1971.....	Fiddler On The Roof	2007.....	Miss Saigon, Pirates Of Penzance Bye Bye Birdie
1972.....	Promises! Promises!, Cabaret	2008.....	Crazy For You, Annie Get Your Gun Forever Plaid, Holiday Extravaganza
1973.....	Butterflies Are Free	2009.....	Evita, 1776, Brigadoon
1974.....	Camelot, Carousel	2010.....	Oklahoma! Jekyll & Hyde West Side Story
1975.....	Company, Anything Goes Damn Yankees, The Cowardly Lion	2011.....	Jesus Christ Superstar*, Dracula*
1976.....	Woman Overboard, HMS Pinafore	2012.....	The Wizard Of Oz, Avenue Q Kiss Me Kate
1977.....	Finian's Rainbow, No! No! Nanette!	2013.....	The Pajama Game, Oliver! White Christmas
1978.....	Rumpelstiltskin	2014.....	Willy Wonka Jr., Singin' In The Rain Meet Me In St. Louis, White Christmas
1979.....	Applause, Little Mary Sunshine	2015.....	Hairspray, Damn Yankees Shrek TYA, Thoroughly Modern Millie
1980.....	Once Upon A Mattress	2016.....	The Music Man, Guys & Dolls A Christmas Story The Musical
1981.....	The Fantastik's Bye Bye Birdie, Kiss Me Kate	2017.....	My Fair Lady, Little Shop of Horrors
1982.....	South Pacific, Mame	2018.....	Hello Dolly!, Anything Goes South Pacific
1983.....	Oliver!, Fiddler On The Roof	2019.....	Joseph, The Producers, Annie
1984.....	Annie, Kismet	2020...	The Sound of Music, White Christmas
1985.....	Chicago, West Side Story	2022.....	Beauty & the Beast, 42nd Street
1986.....	Evita A Day In Hollywood/A Night In The Ukraine Gypsy	2023.....	Disney's Newsies
1987.....	A Chorus Line, 42nd Street	2024....	25th Annual Putnam County Spelling Bee Young Frankenstein
1988.....	Little Shop Of Horrors, Follies Anything Goes	2025.....	Fiddler on the Roof The Wedding Singer
1989.....	Musical, Mame, La Cage Aux Folles		
1990.....	As Time Goes By, Mack and Mabel		
1991.....	Into The Woods, Hello, Dolly!		
1992.....	Singin' In The Rain, Chess		
1993.....	City Of Angels A Day In Hollywood/A Night In The Ukraine Forum		
1994.....	My Favorite Year The Music Man, Bye Bye Birdie		
1995.....	Annie Warbucks And The World Goes 'Round, Nunsense		
1996.....	Guys & Dolls Summer Stock Murders, Meet Me In St. Louis		

*Co-Production with Theatre Nebula

Break A Leg Music On Stage!

LAW OFFICES OF

John Peter Curielli P.C.

126 SOUTH NORTHWEST HIGHWAY

BARRINGTON, IL 60010 - 4608

Phone: (847) 381 - 7555

Fax: (847) 381 - 7578

Email: LawOffices@Curielli.com

Website: www.Curielli.com

ESTATE PLANNING

WILLS - TRUSTS

PROBATE

BUSINESS LAW

COMMERCIAL TRANSACTIONS

REAL ESTATE

PERSONAL INJURY



**The best of Broadway,
in Palatine!**